



# LIFTGATES

## ILK

# OWNER'S MANUAL

ECN-M0254 Rev. 1.3, Date 07-10-2013 Part #90-0413-100

---

*PALFINGER Liftgates, LLC. 15939 Piuma Ave., Cerritos, CA 90703*  
*Tel (888)-774-5844 Fax (562)-924-8318*

*PALFINGER Liftgates, LLC. 572 Whitehead Road, Trenton, NJ 08619*  
*Tel (609)-587-4200 Fax (609)-587-4201*

Visit our website at [www.palfinger.com](http://www.palfinger.com) for up to date information and notifications

If you received this product with damaged or missing parts,

Please contact PALFINGER Liftgates at (888)-774-5844

---

## **Table of Content**

<b>Table of Figures .....</b>	<b>II</b>
<b>1. Important Notes.....</b>	<b>1</b>
1.1 Attention .....	1
1.2 Important Notes .....	1
1.3 General Information.....	2
<b>2. Safety Information.....</b>	<b>4</b>
<b>3. Basic Parts in Detail.....</b>	<b>6</b>
3.1 General View of Liftgate .....	6
3.2 Circuit Board Connector Cables .....	7
3.3 Control Panel.....	8
<b>4. Maximum Load and Placing of Load on Platform .....</b>	<b>9</b>
<b>5. Operation of Liftgate .....</b>	<b>11</b>
5.1 Operation by Control Box .....	11
5.2 Operation by Hand Held Remote Control.....	11
5.3 Operation by Foot Control (optional).....	12
5.4 Operation by Wireless hand Held Remote (optional) .....	12
5.5 Application of the Liftgate for Dock Loading.....	13
<b>6. Preventive Maintenance and Quick Check.....</b>	<b>14</b>
6.1 Maintenance and Care .....	14
6.2 Lubrication.....	15
6.2.1 Lubrication Plan .....	15
6.2.2 Checking and Changing the Oil.....	16
6.2.3 Recommended Hydraulic Fluids .....	16
6.3 Decal Placement and Inspection .....	17
6.4 Quick Check List.....	19
<b>7. Troubleshooting.....</b>	<b>20</b>
7.1 Basic Function Check.....	20
7.1.1 LIFTGATE is completely DEAD (No Clicking or Movement at all) .....	20
7.1.2 On-Off L.E.D.s are on but all functions are dead .....	22
7.1.3 L.E.D.s continue to stay on, after switch is turned off .....	22
7.1.4 Platform tilts down before it reaches the ground.....	23
7.2 Possible cause & remedy of lift gate malfunction .....	24
7.3 Electrical and Hydraulic Schematic.....	28
7.3.1 Wiring Diagram .....	28
7.3.2 Electrical Schematic.....	29
7.3.3 Connector Overview .....	30

---

7.3.4	Hydraulic Schematic .....	31
<b>8.</b>	<b>Needed Information for Ordering Spare Parts and Repairs .....</b>	<b>32</b>
8.1	Ordering Spare Parts.....	32
8.2	Repairs .....	32
<b>9.</b>	<b>Warranty .....</b>	<b>33</b>
<b>10.</b>	<b>Contact Address .....</b>	<b>34</b>

### **Table of Figures**

<b>Figure 1: ILK Cantilever</b> .....	<b>6</b>
<b>Figure 2: Center Point of Load</b> .....	<b>9</b>
<b>Figure 3: Load Diagram (ILK Plus 20 to 33)</b> .....	<b>9</b>
<b>Figure 4: Load Diagram (ILK Plus 44 to 66)</b> .....	<b>10</b>
<b>Figure 5: Lube Points</b> .....	<b>15</b>
<b>Figure 6: Power Pack (Side and Top View)</b> .....	<b>16</b>
<b>Figure 7: Decal Placement Guideline</b> .....	<b>18</b>
<b>Figure 8: Main Wiring</b> .....	<b>28</b>
<b>Figure 9: Electrical Schematic</b> .....	<b>29</b>
<b>Figure 10: Connector Overview</b> .....	<b>30</b>
<b>Figure 11: Hydraulic Schematic</b> .....	<b>31</b>

### **List of Tables**

<b>Table 1: Maintenance Schedule</b> .....	<b>14</b>
<b>Table 2: Recommended Hydraulic Fluids</b> .....	<b>16</b>
<b>Table 3: Warranty Coverage Schedule</b> .....	<b>33</b>

---

## 1. Important Notes

### 1.1 Attention

Before starting any operations of the liftgate, please read and understand this OWNER'S MANUAL. Its intention is to act as a guide for the operation personal as well as to give help with preventive maintenance but does not take place of unauthorized usage or repair by unqualified personnel.

Please contact your nearest PALFINGER Liftgates distributor or PALFINGER Liftgates in California or New Jersey for assistance if you have questions regarding installation, operation or maintenance.

This owner's manual applies to the following models: **ILK Plus 20, 22, 33, 44, 55 & 66**



This is the safety alert symbol. It is used to alert you to potential personal injury hazards. Obey all safety messages that follow this symbol to avoid possible injury.

### 1.2 Important Notes

The Palfinger liftgate is a cantilever design, electro-hydraulically driven lift gate.

The Hydraulic Power Unit (HPU) is easily accessible for service and exchange. The whole assembly slides out and can be serviced at that point. To exchange the HPU, two hoses and the battery cables need to be disconnected.

The platform is supported by two arms, linked with a torsion tube. A three piece under ride guard is preinstalled on the liftgate.

Lifting actions are carried out by the two hydraulic lift cylinders mounted on the lift arms.

Two hydraulic tilt cylinders, mounted outside of each lift arm are controlling the platform's tilting action. This enables the platform to maintain its position throughout the lift mode, regardless of the terrain.

The hydraulic cylinders are equipped with solenoid operated release valves, located at the port of each cylinder. This prevents the platform from moving unless the operator is activating the controls. This system also enables you to store the lift gate without a separate platform latch.

The piston rods are treated against corrosion and also protected with plastic or rubber boots to protect from road gravel and dirt. The Hydraulic Power Unit is equipped with a built-in pressure relief valve, which prevents overloading when lifting and tilting up.



**The valves do not prevent overloading of the platform when lowering or tilting down.**



---

The electric supply is taken from the vehicle battery. If the vehicle battery is not sufficient, an auxiliary battery kit needs to be installed. The electric control power is secured via a 20 Amp fuse and an on-off switch located inside the cab. The switch has L.E.D. lights indicating when the control power is on. (Trailer application has the on-off switch located in the lockable control box.)

The liftgate is operated from an outside mounted control box which is located on the curbside underneath the body. A standard 3-button hand held remote control is also supplied with the lift. A variety of different control options can be purchased with the PALFINGER Liftgates product.

### **1.3 General Information**

#### **REMEMBER!**

It is the fleet manager's responsibility to educate the operator on the liftgate and its intended use. The operator's attention should be drawn to the permitted load limits and an understanding of the operation to ensure the safety throughout the operation.

#### **ONE-MAN OPERATION!**

Never let an "outsider" operate the liftgate while you are handling the cargo.

A "misunderstanding" can result in serious personal injury.



In the interest of safety it is important that all operating personnel properly understand the functions of the liftgate, possible hazards, dangers, the load limits and load positioning for that specific unit.

#### **IMPORTANT NOTICE!**



Before the operator uses the liftgate, they should be thoroughly familiar with the lift's functions and usage according to the following:

1. Improper operation of this lift can result in serious personal injury. Do not operate unless you have been properly instructed, have read and are familiar with the operation instructions. If you do not have a copy of the instructions please obtain them from your employer, distributor or lessor, as appropriate, before you attempt to operate the lift.
2. Be certain the vehicle is properly and securely stopped before using the lift.
3. Always maintain the lift gate and inspect it for damage before usage. If there are signs of improper maintenance, damage to vital parts or slippery platform surface, do not use the lift. Do not attempt your own repairs unless you are specifically trained.

- 
4. Do not overload. See the Rating Label on the unit for the rated load. Remember that this limit applies to both raising and lowering operations.
  5. Each load should be placed in a stable position as near as possible to the body of the truck/trailer.
  6. Never stand in, move through or allow anyone else to stand in or move through the area in which the lift operates, including that area in which a load might fall.
  7. This is not a passenger lift. Do not ride the lift with unstable loads or in such a manner that a failure would endanger you. The lift is not equipped with a back-up system to prevent falling cargo in the event of a failure.

**The maximum loads must be observed and followed!**



**IMPROPER USE**



It is not permitted to use the tail lift:

- As an elevating work platform.
- To push loads.
- To carry people (Only the operator may travel on the platform).
- To clear snow.

Please read through the operational and technical description of the PALFINGER Liftgate.

Thank you for choosing PALFINGER Liftgates.

---

## 2. Safety Information

This manual follows the Guidelines set forth in “ANSI Z535.4-2007” for alerting you to possible hazards and their potential severity.

### **DANGER**

**! DANGER** indicates an imminently hazardous situation which, if not avoided, **will result** in death or serious injury.

### **WARNING**

**! WARNING** indicates potentially hazardous situation which, if not avoided, **could result** in death or serious injury.

### **CAUTION**

**! CAUTION** indicates a potentially hazardous situation which, if not avoided, **may result** in minor or moderate injury.

### **CAUTION**

**CAUTION** without the safety alert symbol is used to address practices not related to personal injury.

*(In this manual we use it to alert you to potentially hazardous situation which, if not avoided, may result in property damage.)*

### **NOTICE**

**NOTICE** without the safety alert symbol is used to address practices not related to personal injury.

*(In this manual we use it to alert you to special instructions, steps, or procedures.)*

---

## **WARNING**

Improper operation of this liftgate may result in severe personal injury or death. DO NOT operate unless you have been properly instructed and have read, and are familiar with the procedures in this manual. We have designed this manual to illustrate the steps needed for the basic operation of this ILK liftgate. It also provides safety information and simple preventive maintenance tips.

## **NOTICE**

This manual is not intended for use as a repair or troubleshooting guide. Repairs should be performed by a PALFINGER Liftgates Authorized Service Center.

This Manual has been designed for use in conjunction with the ILK series liftgate only which is designed for different capacities. You have different options to determine the type of your Liftgate:

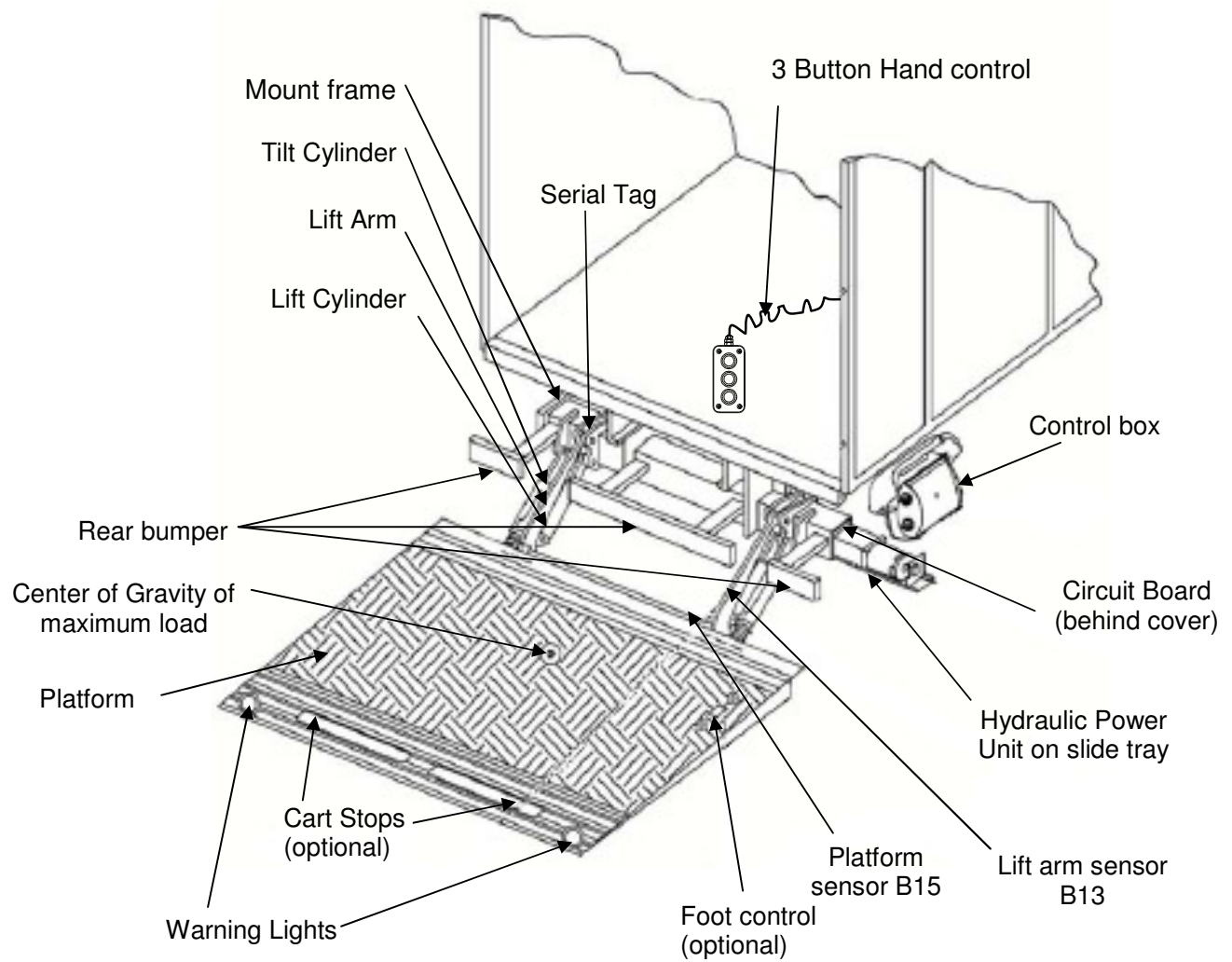
- 1) Refer to the serial number tag on the Liftgate (Driver Side on Top of Mount Frame).
- 2) Ask your employer or lessor.
- 3) Call your PALFINGER Liftgates Authorized Service Center for assistance.
- 4) Call PALFINGER Liftgates for assistance in the USA at 888-774-5844. You can also contact PALFINGER Liftgates by fax (562) 924-8318, or on the internet- [www.PALFINGER.com](http://www.PALFINGER.com)

If you are facing any problems or are in need of repair, contact PALFINGER Liftgates for information regarding experienced and trained Authorized Service Center in your area.

*Replacement manuals are available, just call us & order your manuals for FREE.*

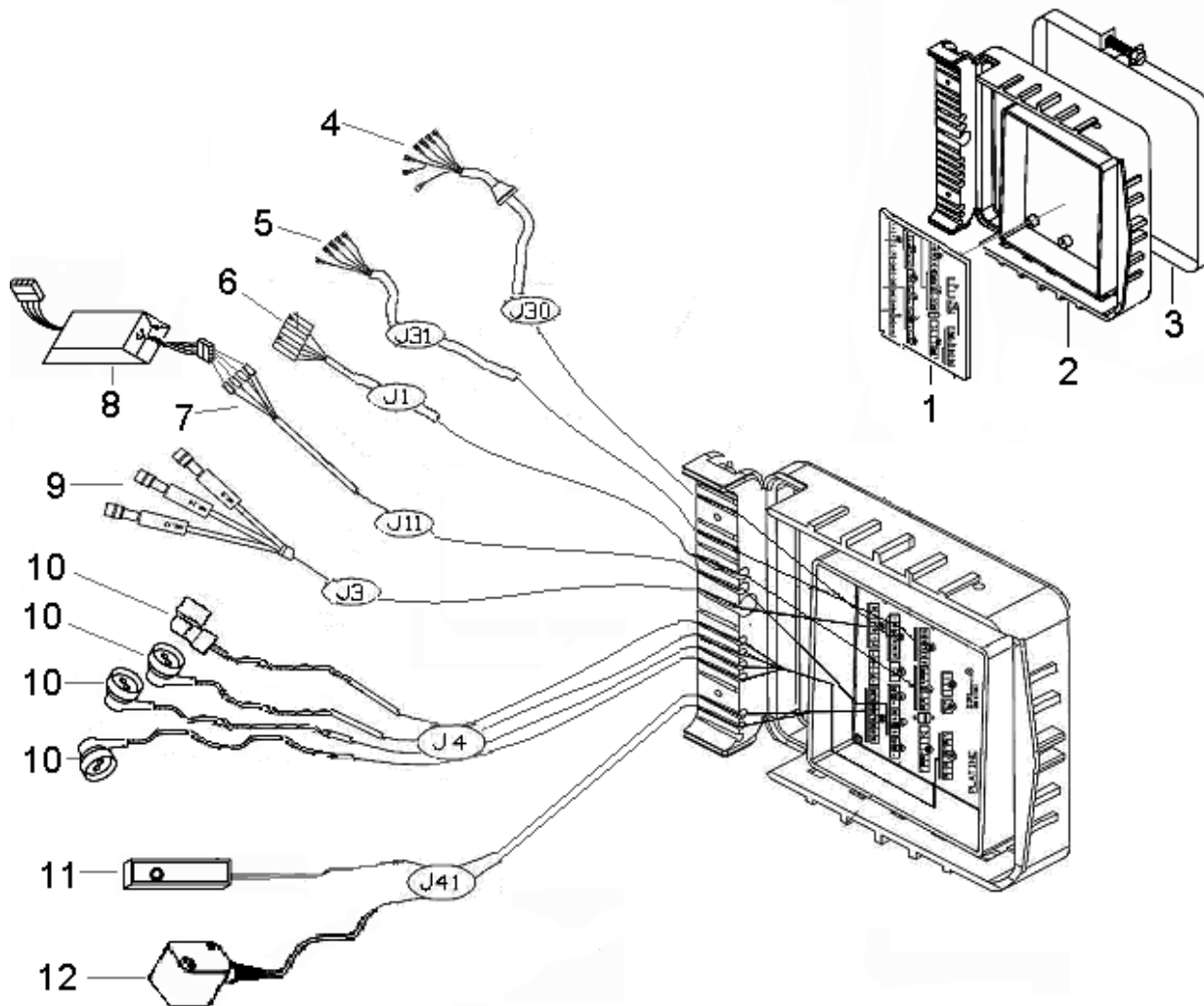
---

**3. Basic Parts in Detail**  
**3.1 General View of Liftgate**



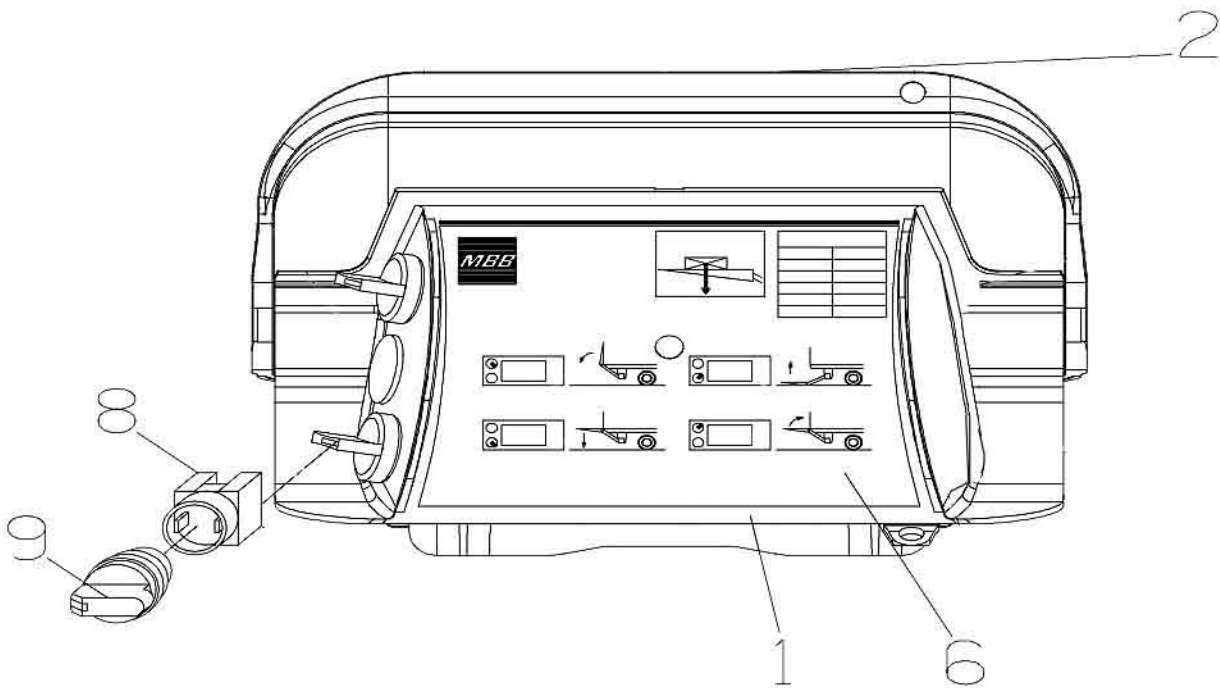
***Figure 1: ILK Cantilever***

### 3.2 Circuit Board Connector Cables



No.	Description	Part No.
1	PC- board	P-200 7193K
2	Cover for control system	P-200 7474
3	Clamp for cover	P-201 0169
4	Wire harness for control box (J30)	P-200 7295
5	Wire harness for hand control (J31)	P-200 8921
6	Wire harness for power pack (J1)	P-200 7298
7	Wire harness for cab on-off switch (J11)	P-200 7049
8	Power relay for J11	P-200 7044
9	Wire harness for warning lights and foot control (J3)	P-134 2776
10	Cable for solenoid valve (J4)	P-6725 4198
11	Sensor B13 for lift arm (J41)	P-133 2476
12	Sensor B15 for platform (J41)	P-133 2485

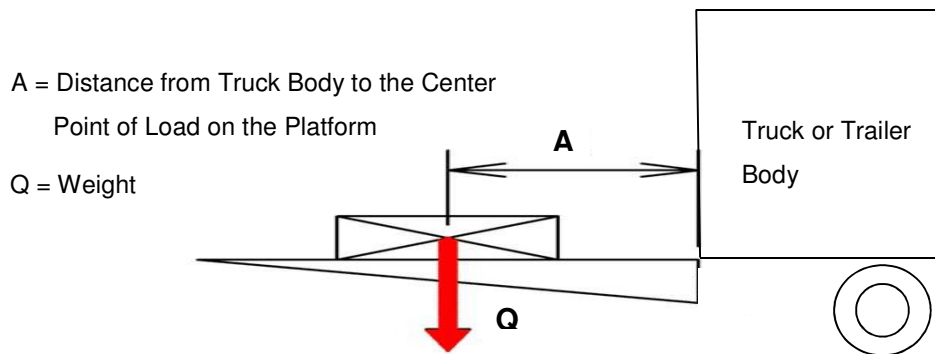
### 3.3 Control Panel



No.	Description	Part number
1	CONTROL PANEL OUTER BOX	P-2009205
2	CONTROL BOX LID	P-2007476
6	LABEL	P-2007278
8	CONTACT BLOCK	P-2007457
9	MOMENTARY TURN SWITCH	P-2007456

#### 4. Maximum Load and Placing of Load on Platform

Every PALFINGER liftgate is rated up to a maximum load. The point of maximum load is rated at a defined distance. The center point of maximum load is at 24" (2000 to 3300 lbs) or at 30" (4400 to 6600 lbs) from start of Truck or Trailer Body, as shown in Figure 2.



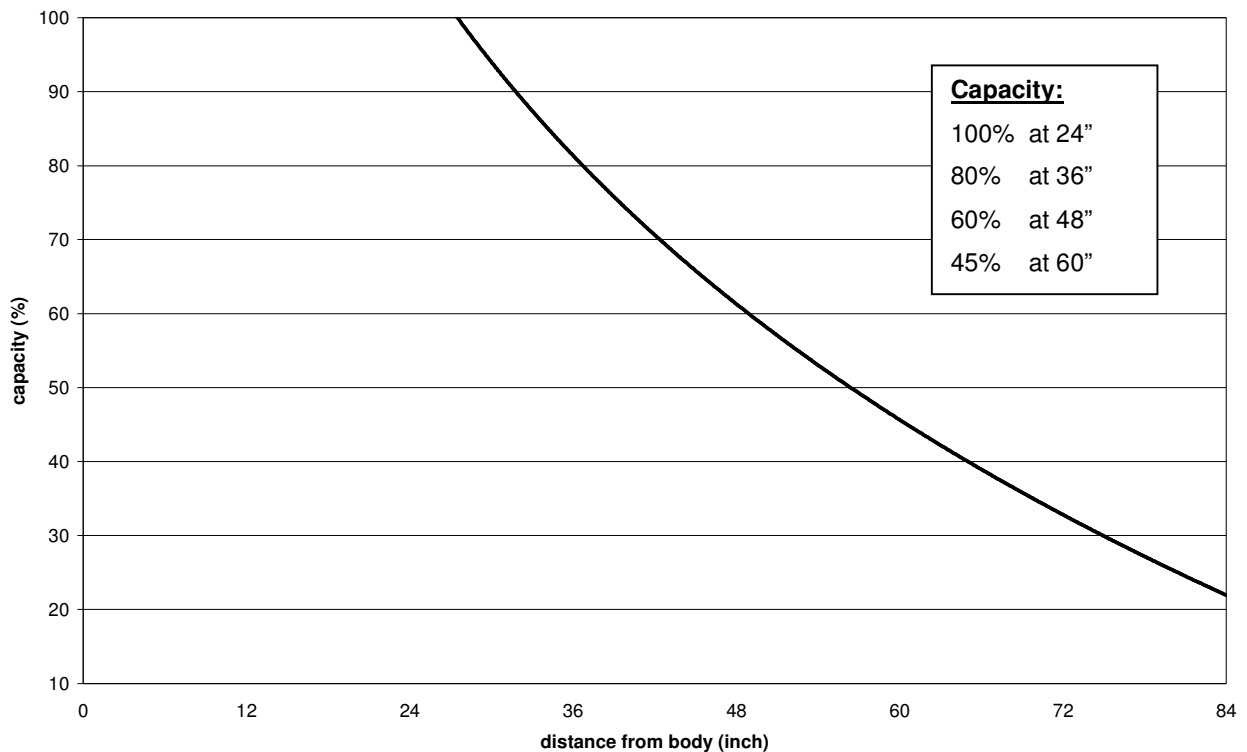
**Figure 2: Center Point of Load**



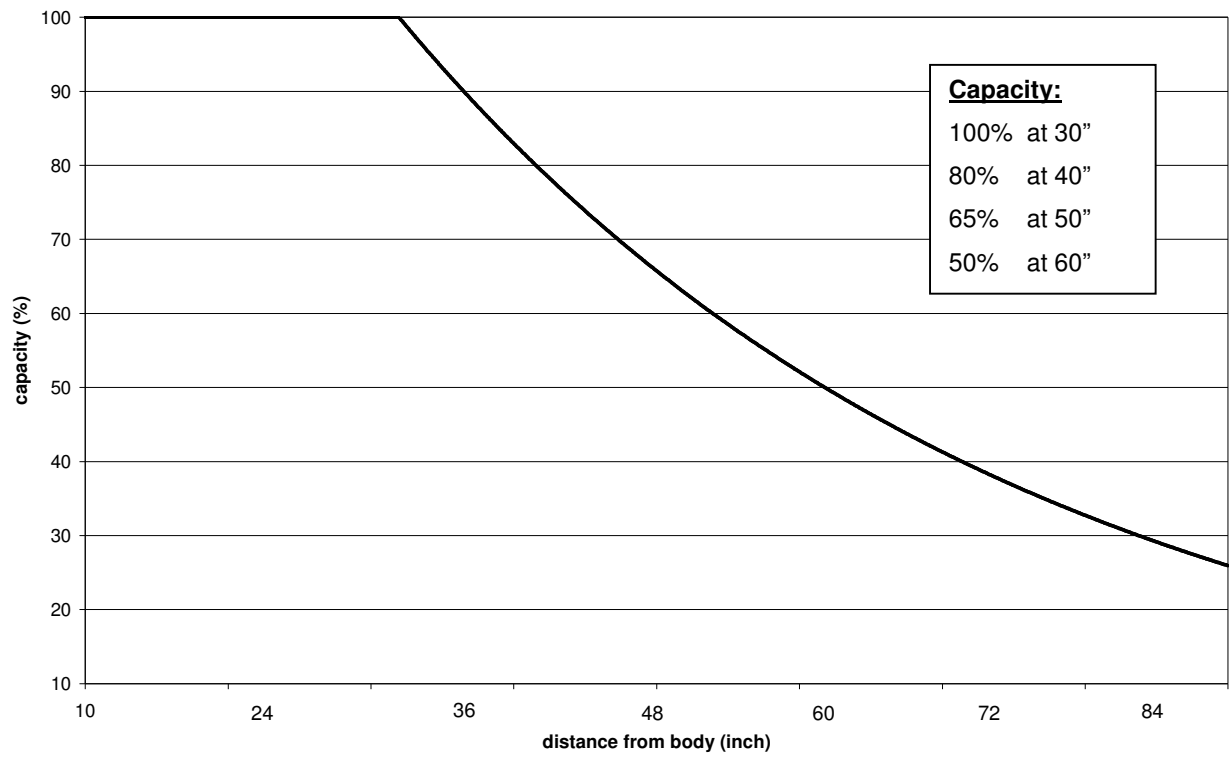
By increasing this distance the maximum load of the lift gate is decreasing.



An overview about the rating, depending on the distance from the end of the platform, is shown in the following load diagram.



**Figure 3: Load Diagram (ILK Plus 20 to 33)**



**Figure 4: Load Diagram (ILK Plus 44 to 66)**

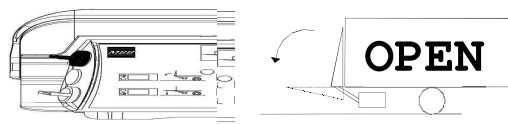
## 5. Operation of Liftgate

**Before use:** Turn Control switch to “ON”, the L.E.D.’s will light up inside the cab. All liftgate functions can be controlled by the 2-switch control box, which is mounted on the curb side of the truck or trailer.

### 5.1 Operation by Control Box

#### 1. TILT DOWN TO LEVEL

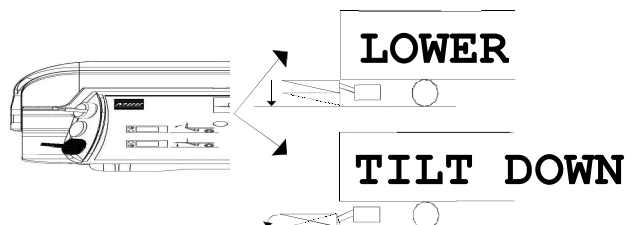
→ Turn the upper switch clockwise



#### 2. LOWERING AND TILT DOWN AT GROUND

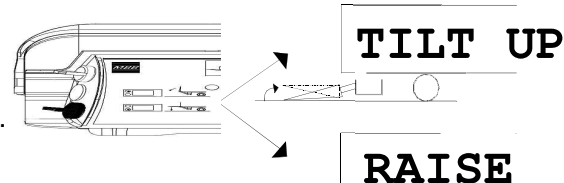
→ Turn the bottom switch clockwise.

After the platform reaches ground, the tip will tilt down if the operator continues to turn the bottom switch.



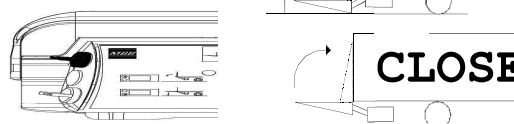
#### 3. TILT UP AND LIFT FROM GROUND

→ Turn the bottom switch counter clockwise (the platform will find level position before starting to raise).



#### 4. TILT UP AT BED LEVEL

→ Turn the upper switch counter clockwise (always raise the gate all the way up before closing the platform).



### 5.2 Operation by Hand Held Remote Control

#### 1. LOWERING DOWN:

Push button number 3

#### 2. LIFTING UP:

Push button number 1

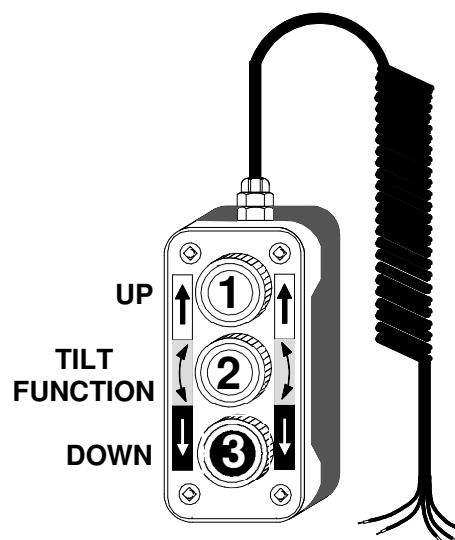
Tilt functions: Push button number 2 while lifting or lowering

#### 1. TILT DOWN:

Push button 2 and 3 at the same time

#### 2. TILT UP:

Push button 2 and 1 at the same time



### 5.3 Operation by Foot Control (optional)

#### DOWN:

Step on switch 1 and hold – wait between one and three seconds before you step on switch 2.

→ For auto tilt, stay on the switches till platform starts tilting.

#### UP:

Step on switch 2 and hold – wait between one and three seconds before you step on switch 1.

→ The platform will tilt up to preset position before raising.

IF BOTH SWITCHES ARE NOT ACTIVATED  
WITHIN THREE SECONDS, START OVER.

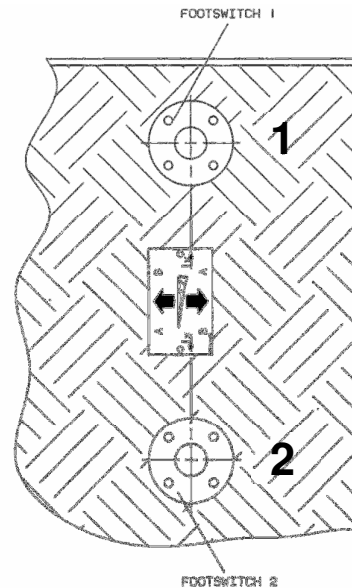


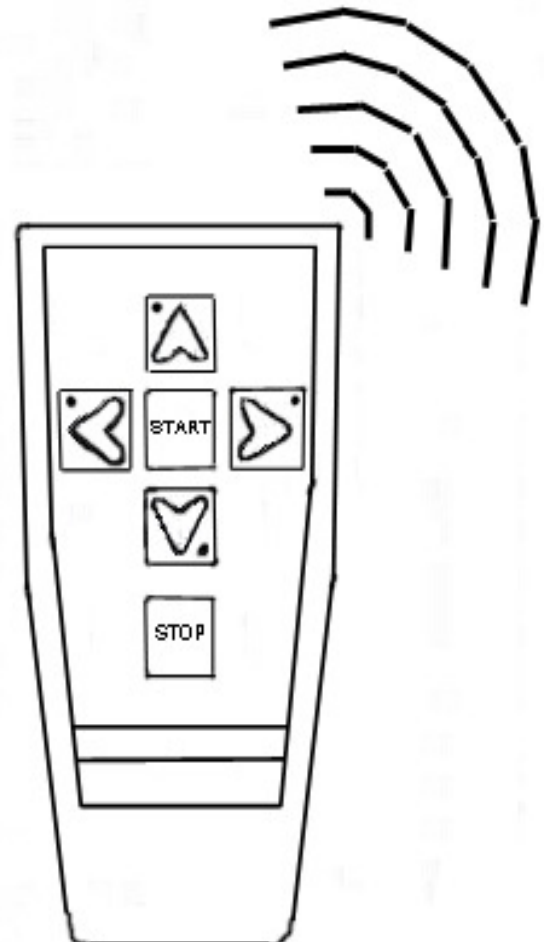
DIAGRAM NO.3,  
FOOT CONTROL ON THE PLATFORM

### 5.4 Operation by Wireless hand Held Remote (optional)

1) By pushing the “START” button the remote will be activated.

2) Each function has a separate button.  
Function is displayed on the button.

3) After finishing using the gate, push the red “STOP” button.  
The wireless remote control will be deactivated.



## 5.5 Application of the Liftgate for Dock Loading

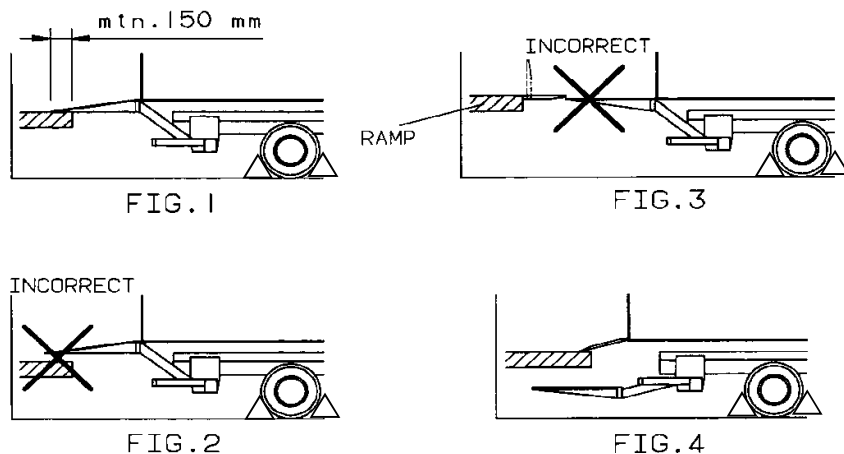


DIAGRAM NO.5:  
USING THE TAIL LIFT  
AS A LINK BRIDGE

→ Move platform under the ramp and apply a cantilever drive-over dock plate (Fig. 4).



**Always chock the wheels using Dock Loading**



**If not possible, there are other ways of loading:**

- The platform must **sufficiently** overlap with the ramp to obtain safe loading surface (Fig. 1)
- When unloading, the rebound clearance of the vehicle is not compensated; therefore the platform must be re-adjusted (opened). Otherwise the tip of the platform can be overloaded, risk of serious damage is possible (Fig. 2)
- Never place drive-over plates or link bridge on the platform tip without supporting the tip. The platform tip must always be supported. (Fig. 3)



**The maximum loads must be observed and followed.**



## 6. Preventive Maintenance and Quick Check

The ILK Plus needs preventive maintenance to perform at its fullest capability. Lubricate and inspect regularly. Also, check that all details are not damaged: Hoses, cables, controls, etc.



### REPAIR OR REPLACE IMMEDIATELY FAULTY PARTS



### 6.1 Maintenance and Care

The following inspection and maintenance should be performed at the recommended intervals depending on operation and amount of cycles or at the time when the unit shows any signs of damage or abuse. Remember that the secret to a long life of your PALFINGER Liftgate is to maintain it through preventive care.

* Recommended bases for inspection and maintenance	Depending on use	Daily	Monthly	Quarterly
cleaning	x			
general lubrication of pins and bushings				x
oil level inspection				x
oil change	x			
check hydraulic hoses and pipes for leaks				x
check controls and connections				x
check pins and pin retaining bolts			x	
check batteries and connections				x
check warning labels and other safety equipment for effectiveness and visibility		x		
visual check for loose or missing parts and un-usual noise during operation		x		
check lock bolts and pins for tightness				x
check complete function of gate		x		
check mounting brackets of lift gate to frame for cracks or damage visually		x		

**Table 1: Maintenance Schedule**

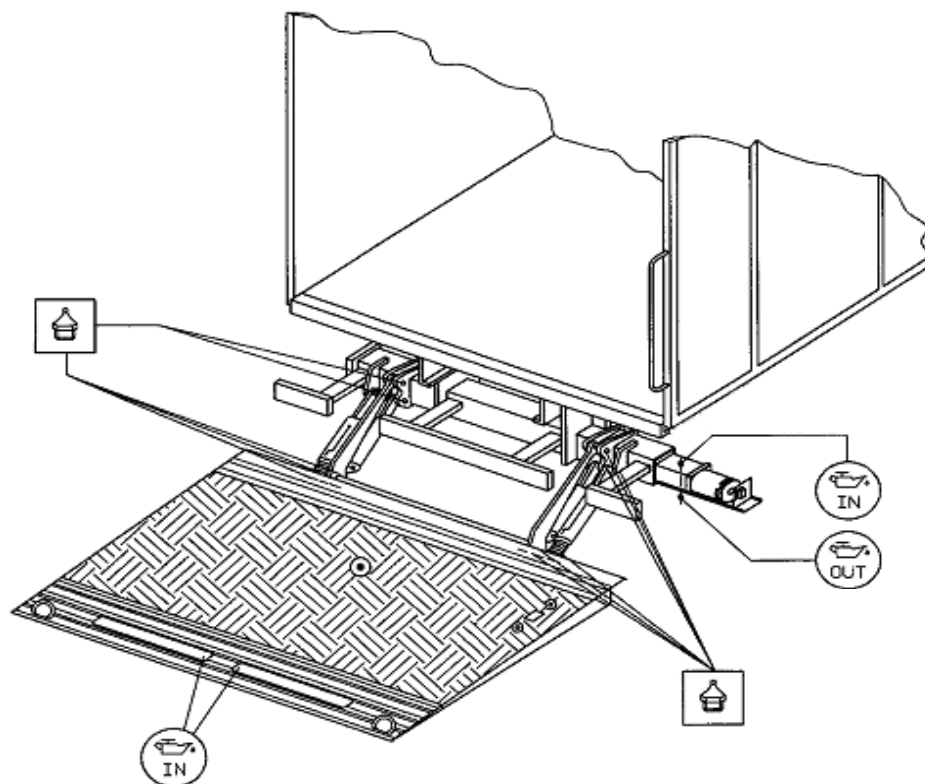
## 6.2 Lubrication

Properly lubricated, the ILK Plus PALFINGER Liftgate will ensure longevity. Therefore, lubricate the lift at the same time as the truck/trailer. Grease more frequently if the liftgate is heavily used. The liftgate should be greased every 1200 cycles (depending on use – estimated every 3 month).

Check the oil level in the tank. The level should be between the two marks 5 and 7 when the platform is tilted down at ground level. Use a good quality of hydraulic fluid, ISO 32. Change oil at least once a year, preferably in the fall before the weather gets cold. The operation of the liftgate will accumulate condensation and some dirt which can interfere with the liftgate functions.

### 6.2.1 Lubrication Plan

All bearing points must be lubricated in accordance with the maintenance intervals.



The gate has 12 grease zerks. On each side are 6 zerks.  
3 in the mount frame area and 3 in the cylinder/platform area.

**Figure 5: Lube Points**



Lubricating nipple (6 on each side)



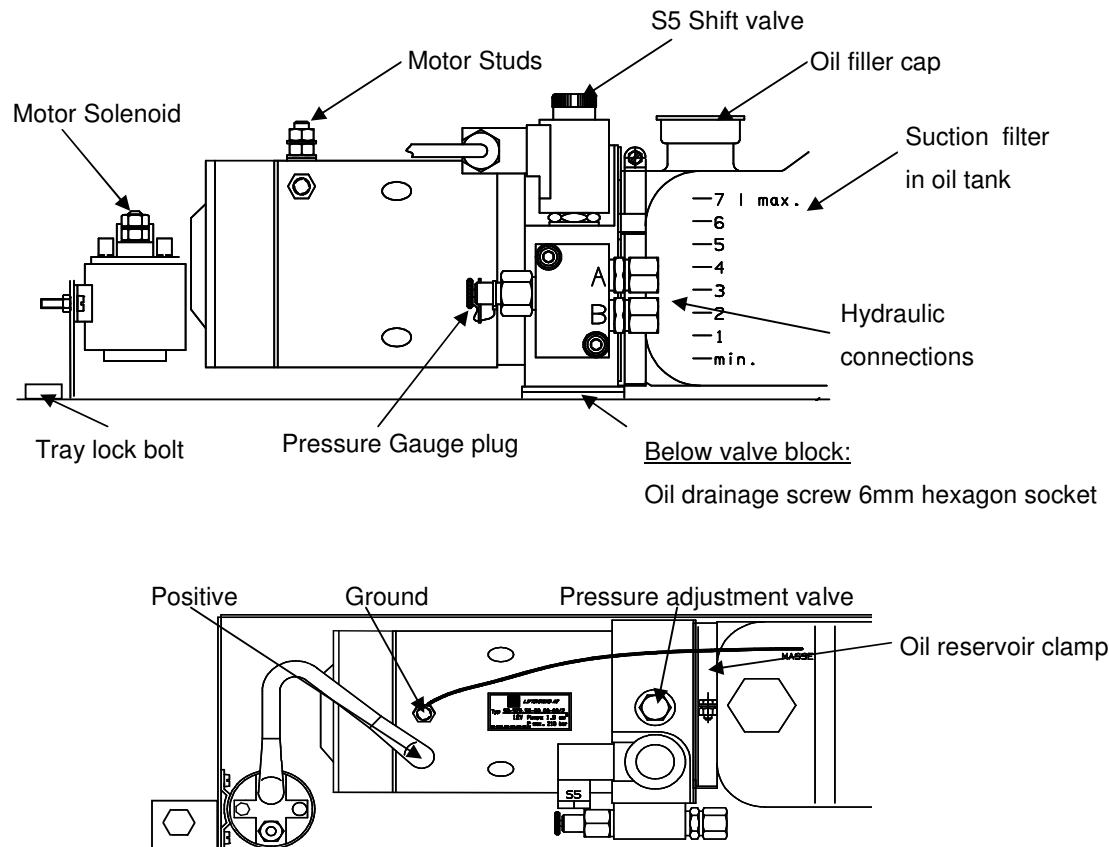
Oil level in the power pack tank (see marking inside of power pack reservoir)



Platform hinges and optional Cart Stops (use WD-40 spray for lubrication)

## 6.2.2 Checking and Changing the Oil

Check the quality of hydraulic fluid. If bad, take the following steps to change the oil. To begin, lower gate to ground and tilt platform down, remove lock bolt. Pull the power pack out till you can reach the oil filler cap. Unscrew the oil drainage bolt (bottom of tray) and let the fluid drain out of the reservoir into an approved container. When the reservoir is empty fill it up with hydraulic oil, as shown on table 2.



**Figure 6: Power Pack (Side and Top View)**

## 6.2.3 Recommended Hydraulic Fluids

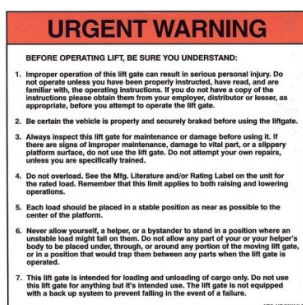
<b>TEMP. RANGE</b>	<b>BRAND</b>	
-10 TO 150 F	EXXON	UNIVIS J26
	MOBIL OIL	DTE 13M
	CHEVRON	AW MV32
	ROSEMEAD	MV 150 (32)
-50 TO 150 F	MOBIL	DTE 13M
	SHELL	AERO FLUID 4
<b>EXTREME COLD TEMPERATURE:</b>	<b>USE MILITARY SPEC:</b>	<b>MIL H5606</b>

**Table 2: Recommended Hydraulic Fluids**

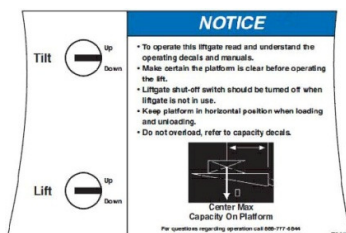
## 6.3 Decal Placement and Inspection

For operator's safety, all decals appearing in "Decal Kit" must be in a conspicuous place on control side of liftgate to be read by operator. This is typically a combination of decals on the liftgate and truck body. Please make sure to place the maximum capacity decal (C) on driver and curb side.

- (A) 1 ATG-URGWA - Urgent warning: Elevating gate instructions
- (B) 1 ATG-ILK - Main Operation (Control Box)
- (C) 2 ATG-XXXX - Max. Capacity (please check the serial number plate to find out your specific capacity)
- (D) 1 ATG-CAB - Liftgate Shut-Off (must be placed next to the Shut-Off Switch)
- (E) 1 ATG-BKR - Circuit Breaker Reset (must be located at the circuit breaker)
- (F) 2 ATG-WLH - Warning: liftgate can crush
- (G) 2 ATG-CTN - Caution: Always stand clear of platform area
- (H) 1 ATG-RESET - Circuit Breaker Protection
- (J) 1 ATG-OPENILD - Notice for Open & Close
- (K) 1 ATG-FT - Notice for Foot Control (if applicable)



Decal - A



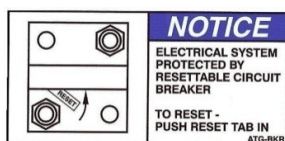
Decal - B



Decal - C



Decal - D



Decal - E



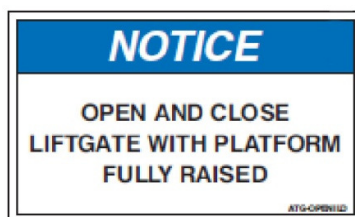
Decal - F



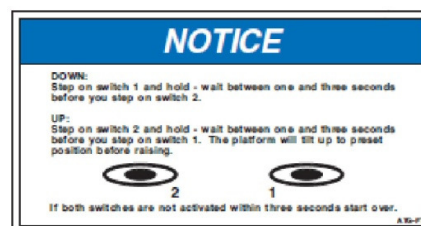
Decal - G



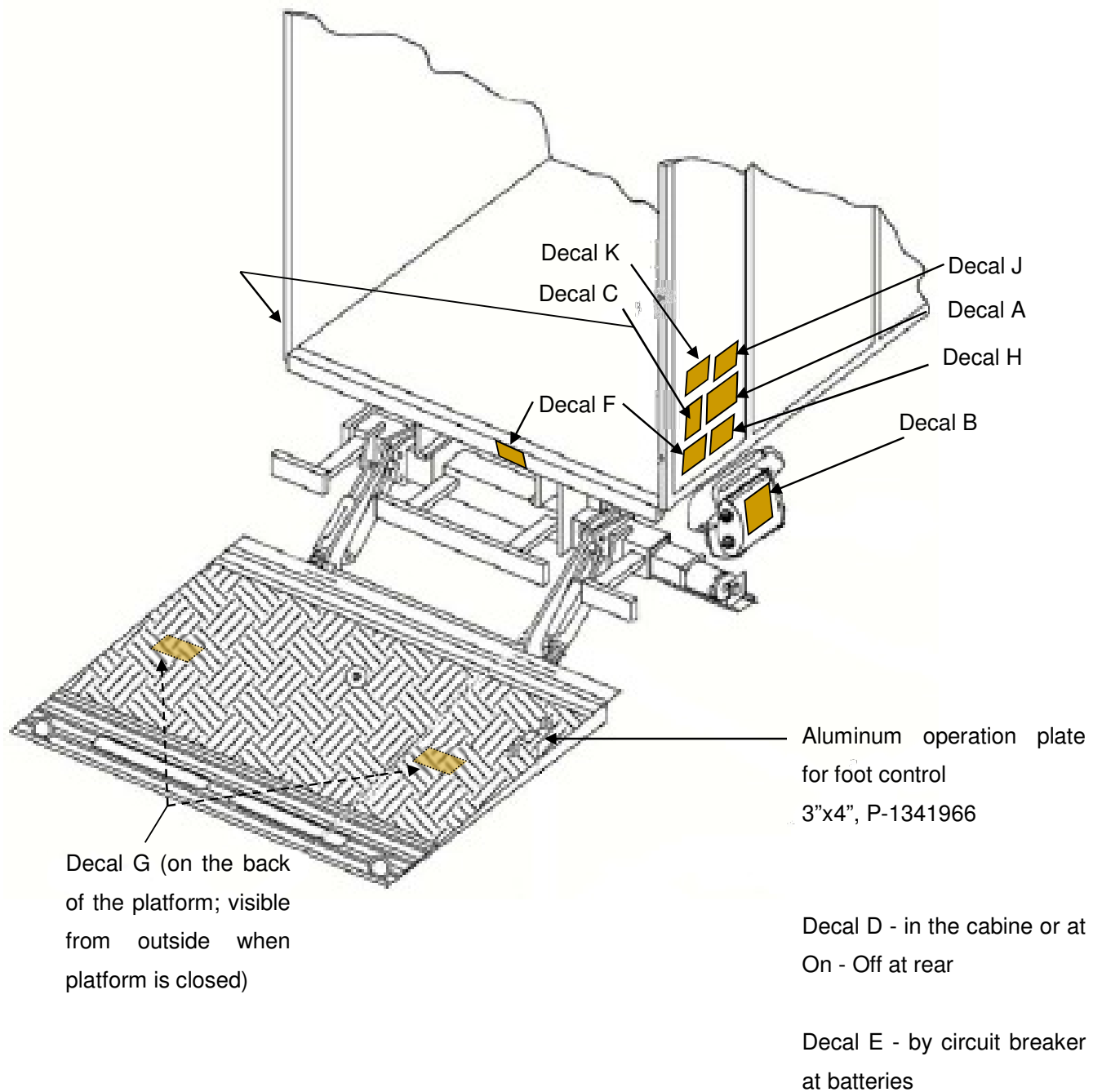
Decal - H



Decal - J



Decal - K



**Figure 7: Decal Placement Guideline**

---

## 6.4 Quick Check List

1. Operate the liftgate throughout its entire operation and check for noise and damage such as bent parts or cracked welds.
2. Inspect all welds and fasteners that attach the mount frame to the truck. All pins and bolts that connect the lift arm to the mount frame and to the platform.
3. Visually inspect the hydraulic lines for damage, scratches, bending or leakage.
4. Inspect the cylinders for leakage and that the cylinder pins are secured with lock bolts.
5. Check the oil level when the platform is down at ground level. The level should fall between the markings 5 and 7 on the tank. We recommend replacing oil after the first 500 cycles, after that on a yearly basis in the fall before winter begins.
6. Check for oil leakage around the HPU and inside mount tube. Tighten or replace components if needed. If you perform work on any hydraulic components bleed the air out of the system by operating all functions several times.
7. Check all electrical connections. Clean and protect battery terminals and check for tightness.
8. Inspect all the terminals on the solenoid-operated valves at the port of the cylinder. Lubricate the terminals for better protection from oxidation if needed.
9. Grease all zerks on the lift gate and make sure they all take grease. Sometimes it helps to operate the lift gate while you do this. There are 12 zerks.
10. Test all the lift gate functions.
11. Check the function of the pressure relief valve.
12. When doing daily checks and you find any kind of damage that can make the use of the liftgate dangerous, it must be repaired before using. All repairs should be made by an authorized technician. Use only original spare parts. If in doubt contact your PALFINGER Liftgates distributor or call PALFINGER Liftgates directly.



**Do not cover up any accidents or damage; it can be dangerous for you and your co-workers.**

---

## 7. Troubleshooting

### ATTENTION:



**Please check the following points before looking for faults:**



Dangerous injuries possible from tools short circuiting main battery connections.



Every time you are finished troubleshooting, close the rubber cover on the curbside of the mount frame. **REINSTALL THE PLASTIC STRAP ON THE RUBBER COVER WHEN FINISHED!!**

- Please change oil after working on hydraulic unit (removal of valves, opening of cylinder etc.)
- There is a possibility of injury if somebody other than an authorized technician works on the electrical system!
- Injuries are possible if short circuits are caused by tools on the main battery connections.

### 7.1 Basic Function Check

#### 7.1.1 LIFTGATE is completely DEAD (No Clicking or Movement at all)

1. Check the cab shut off switch .

Turn on cab switch, located in the cab next to the steering wheel. Location may vary by model and year of truck. Switch has L.E.D. lights: they should stay on continuously.

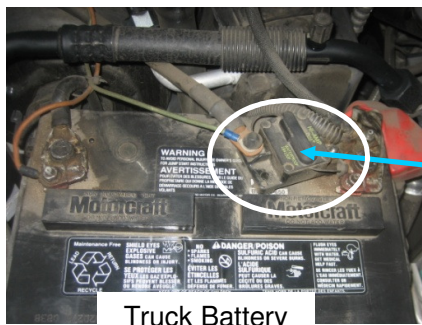


On trailer units, you will find the switch on the control box to activate the gate.

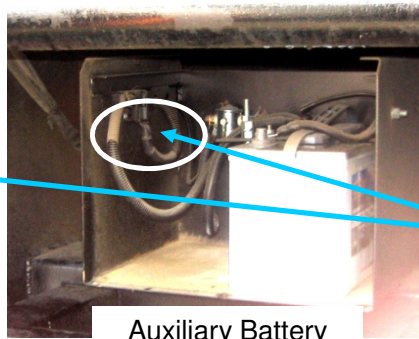
2. Check the circuit breaker at the main batteries.

Every truck has a circuit breaker on top of the main battery. If you have a studio unit, or a trailer, you will also find an auxiliary battery kit as shown in the pictures below ("Truck Battery" and "Auxiliary Battery").

If circuit breaker reset arm is popped out, push it back in as shown on the decal ATG-BKR next to your breaker or on battery box lid.



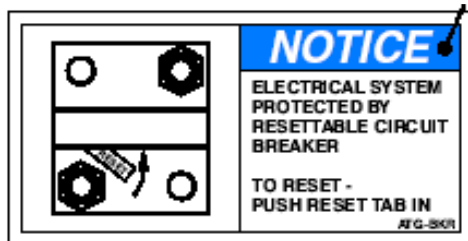
Truck Battery



Auxiliary Battery



Location of  
circuit breaker



Reset your Circuit Breaker

### 3. Are the vehicle batteries charged?

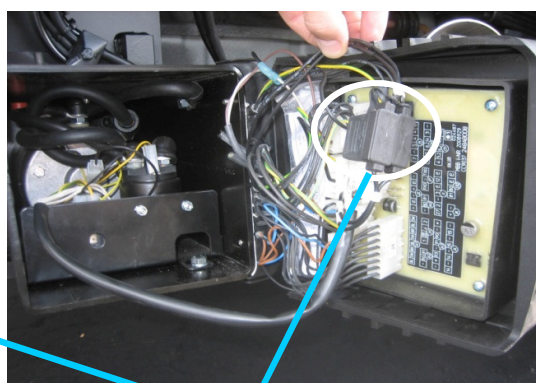
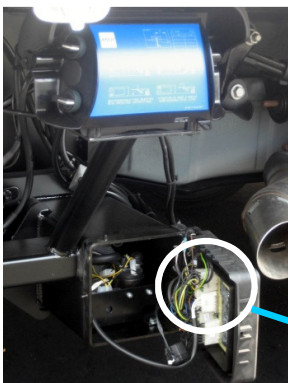
Check batteries and the truck/trailer charging system. Start truck and run engine in fast idle for charging the batteries. If liftgate starts working, recharge batteries.

### 4. Check the fuse at the power pack.

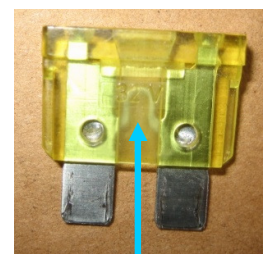
In the Hydraulic Power Unit next to the motor you will find 2 fuses. Check for burned fuse and replace it with the same type.



DO NOT use higher amperage fuse.



Open this cap to check the fuse



Replace fuse when  
metal bridge is broken

- 
5. Is the connection to ground in power pack OK?  
Is the ground connection from the liftgate to vehicle OK?
  6. Check the oil level in the power pack reservoir.
  7. Are there any damages on mechanical or electrical parts (such as damaged cables)?

### 7.1.2 On-Off L.E.D.s are on but all functions are dead

Possible malfunctions:

1. Short in hand held remote or its wire → remove plug J-31.
2. Short in control box wire → remove plug J-30.

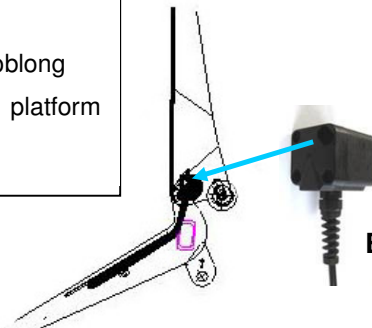
After disconnecting plugs – reboot board by unplugging J-1 for 5 seconds and plug it back.

### 7.1.3 L.E.D.s continue to stay on, after switch is turned off

- Make sure platform is closed and stored vertically.
- Adjust the B-15 switch.
- B-15 is not working → unplug J-41 (gate operates without sensor but loses auto-tilt).

B-15 adjustment:

- one of the holes in the B-15 switch is oblong
- adjust the switch so it shuts off when platform is vertical



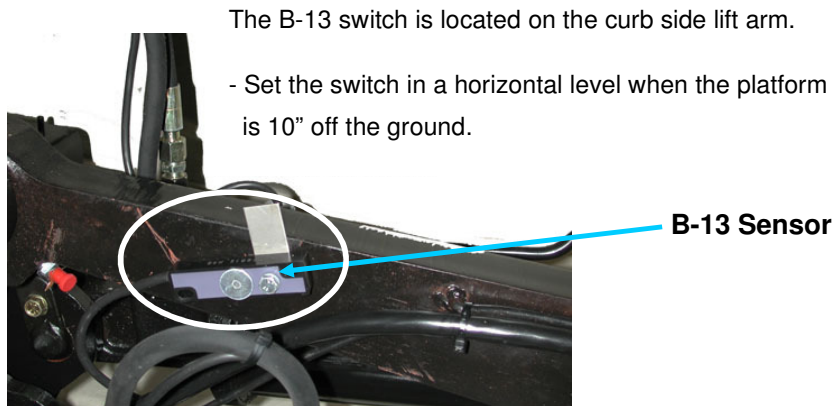
Make sure, the wire strain relief is always parallel with top of the platform.

**B-15 Sensor**

---

#### 7.1.4 Platform tilts down before it reaches the ground

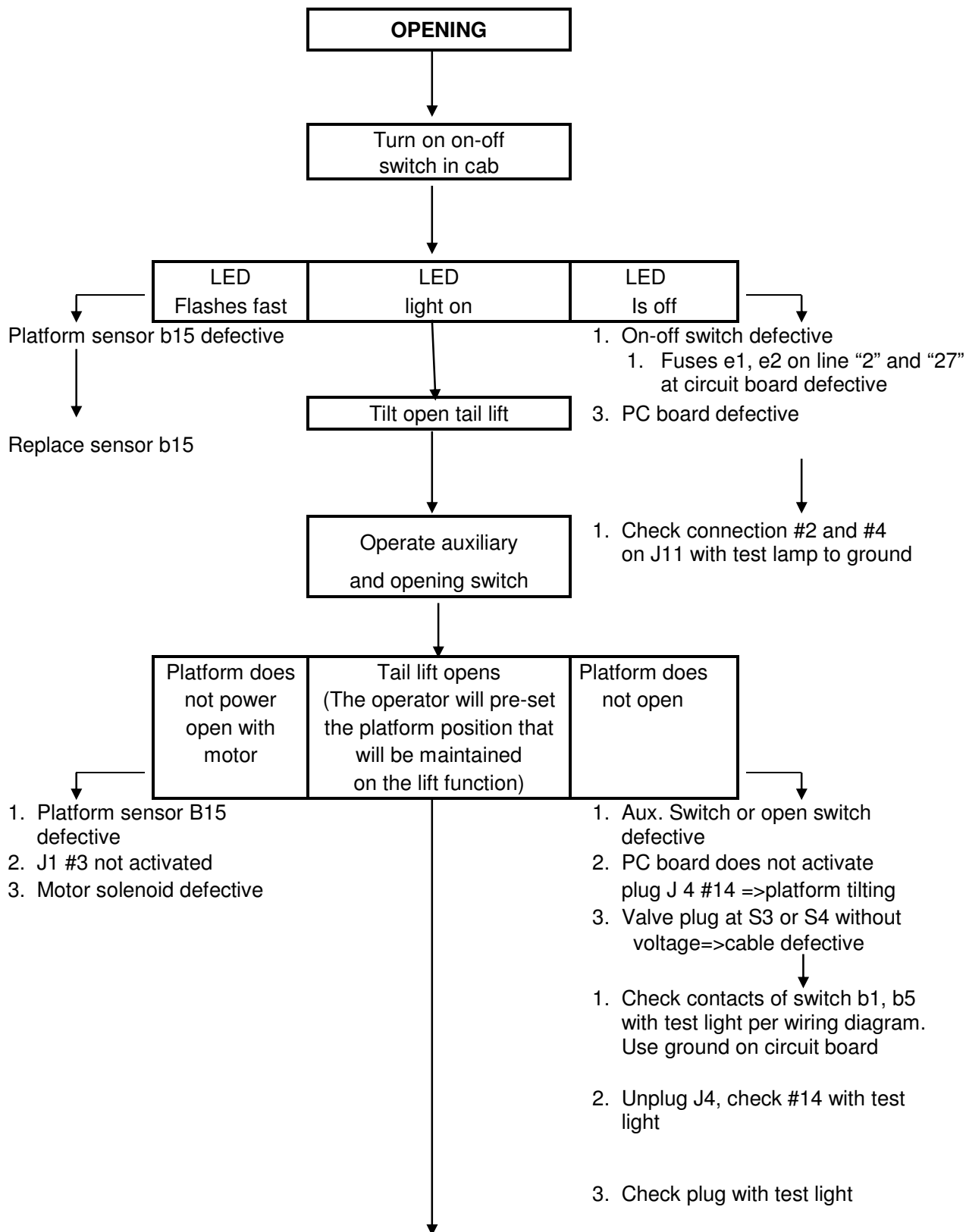
- Adjust B-13 lift arm switch.
- B-13 is not working → unplug J-41 (gate operates without sensor but loses auto-tilt).

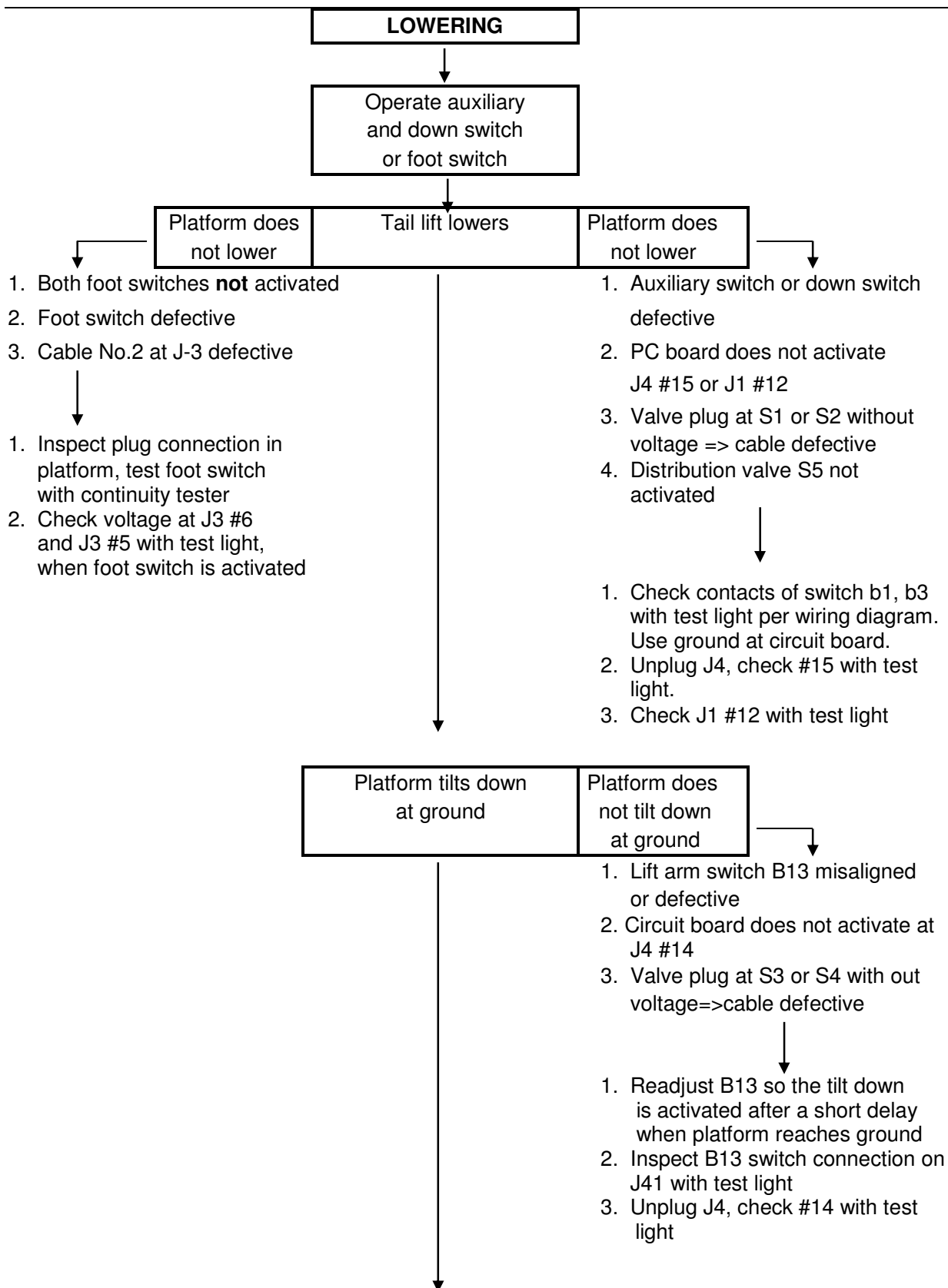


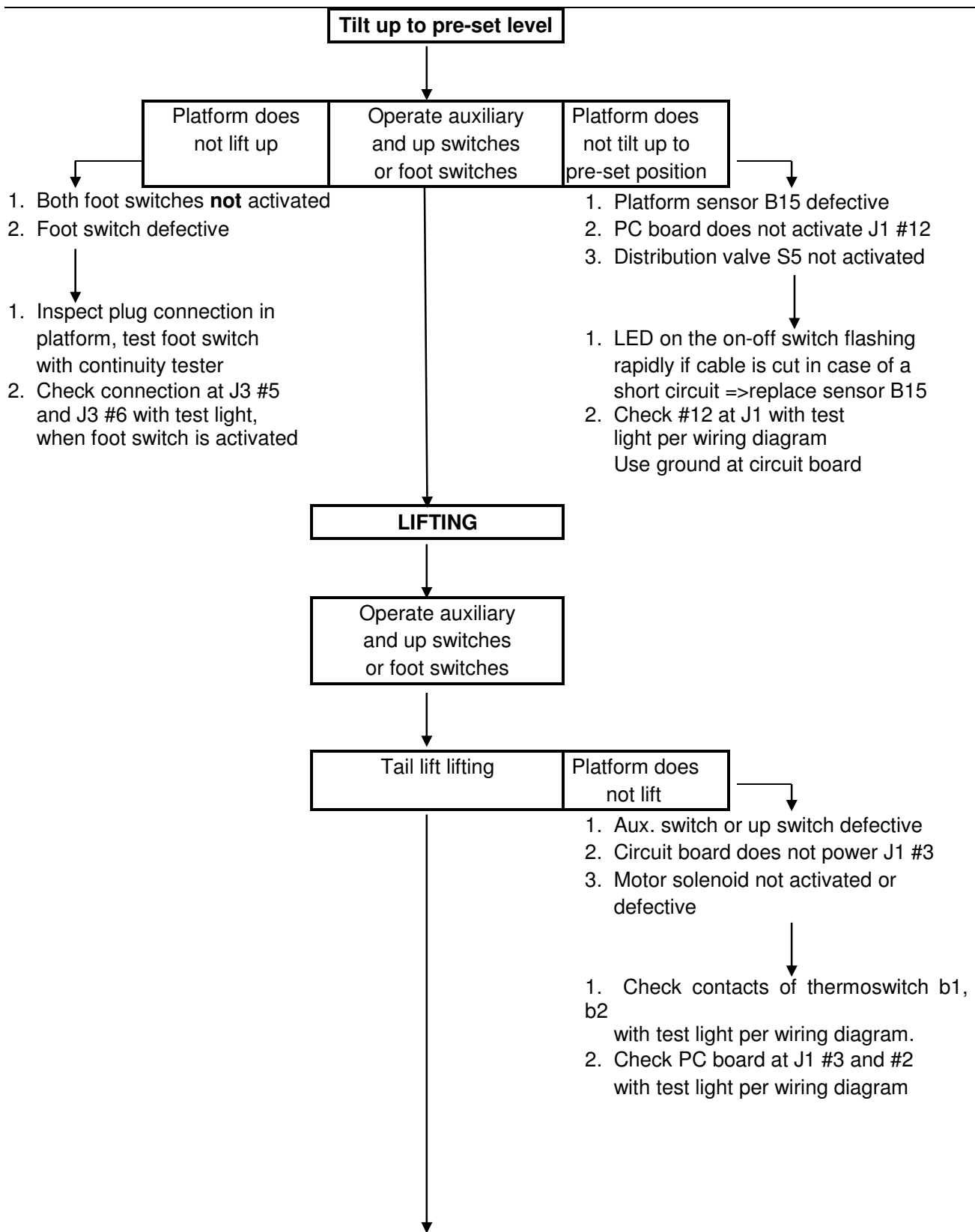
If gate is still not working, take Truck/Trailer to a repair station.

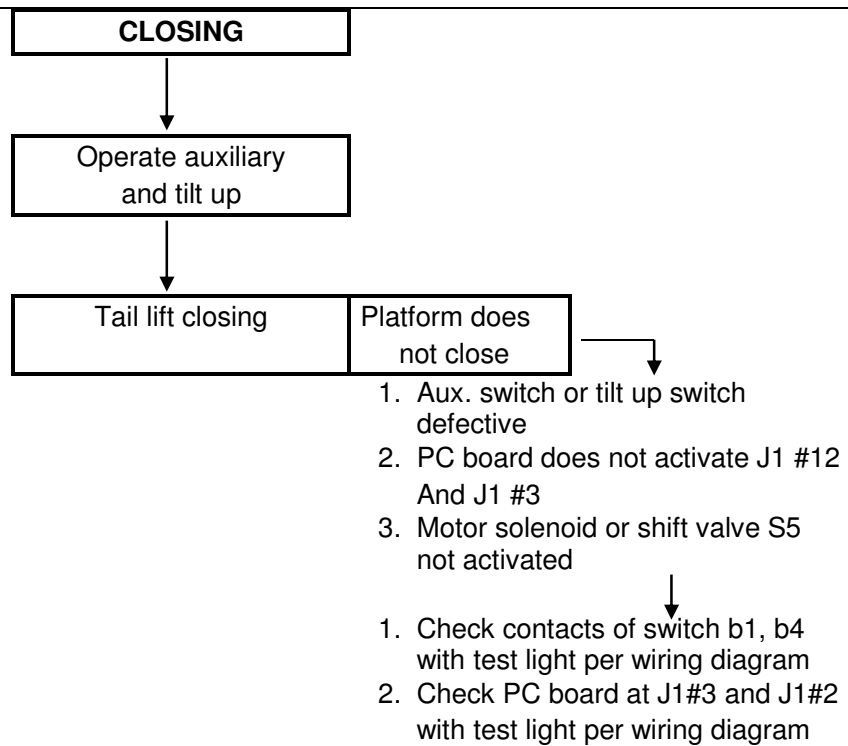


## 7.2 Possible cause & remedy of lift gate malfunction



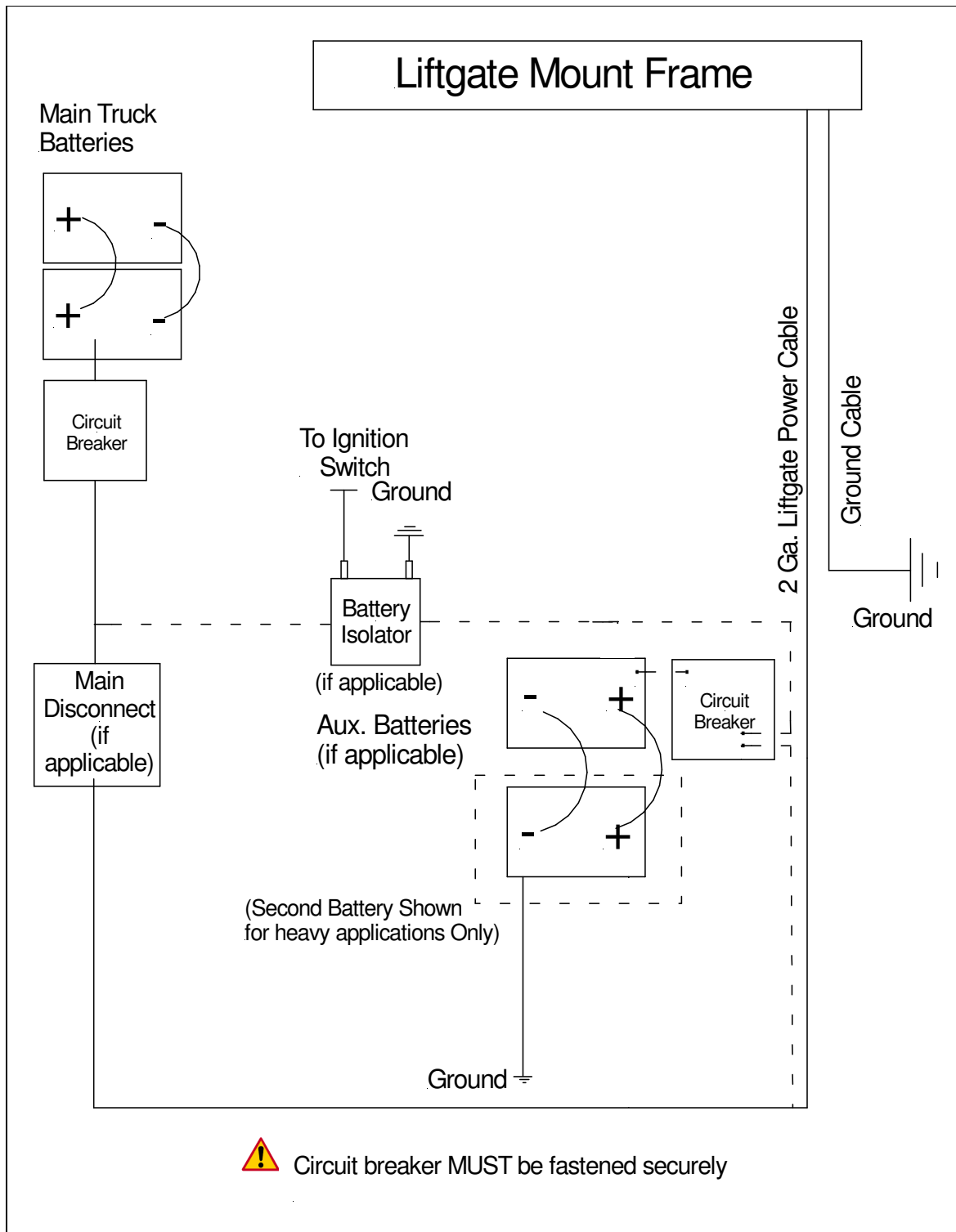






## 7.3 Electrical and Hydraulic Schematic

### 7.3.1 Wiring Diagram

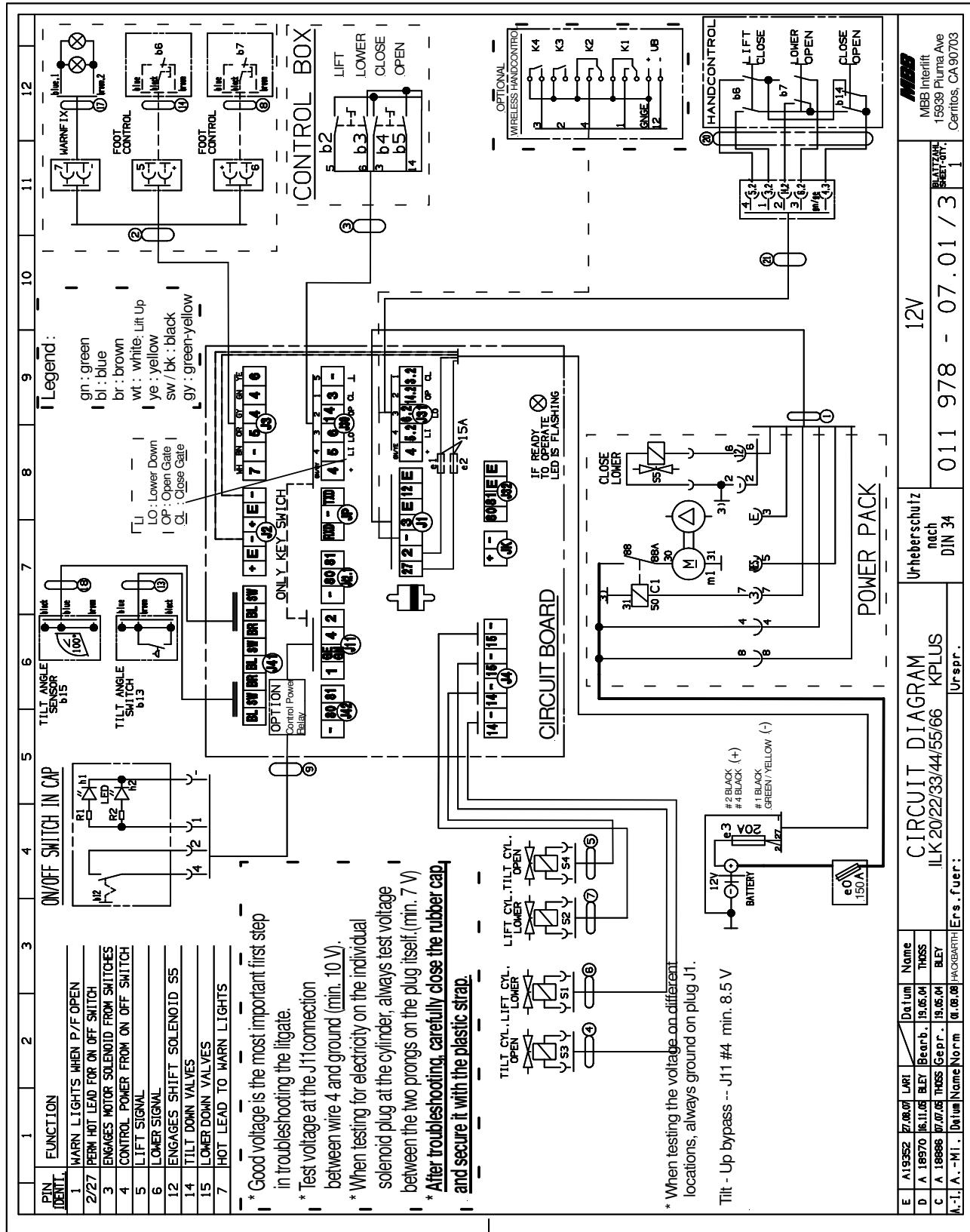


**Figure 8: Main Wiring**



**FOLLOW DOTTED LINE IF ISOLATOR OR AUXILLIARY BATTERIES INSTALLED!**

### Electrical Schematic



**Figure 9: Electrical Schematic**

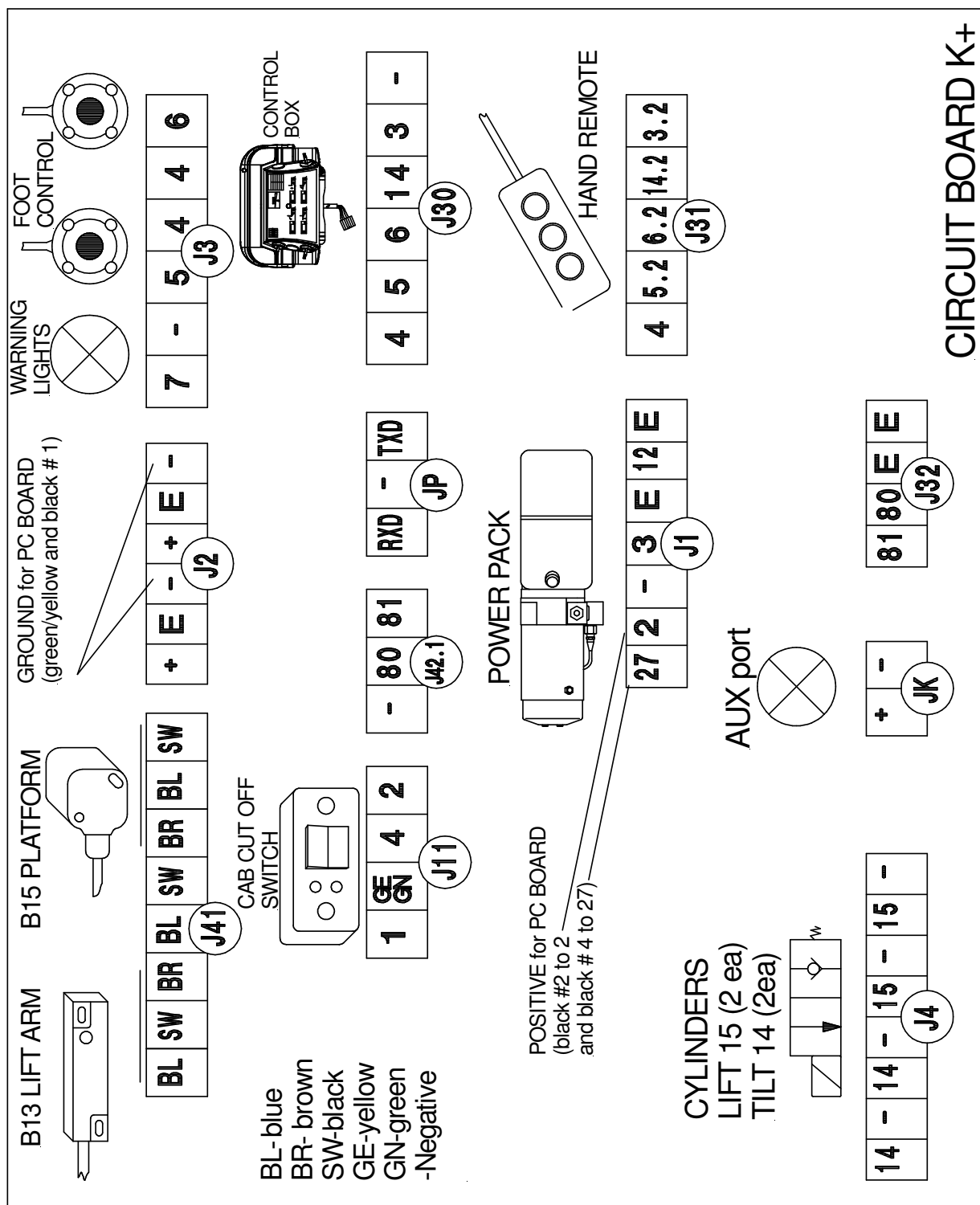


Figure 10: Connector Overview

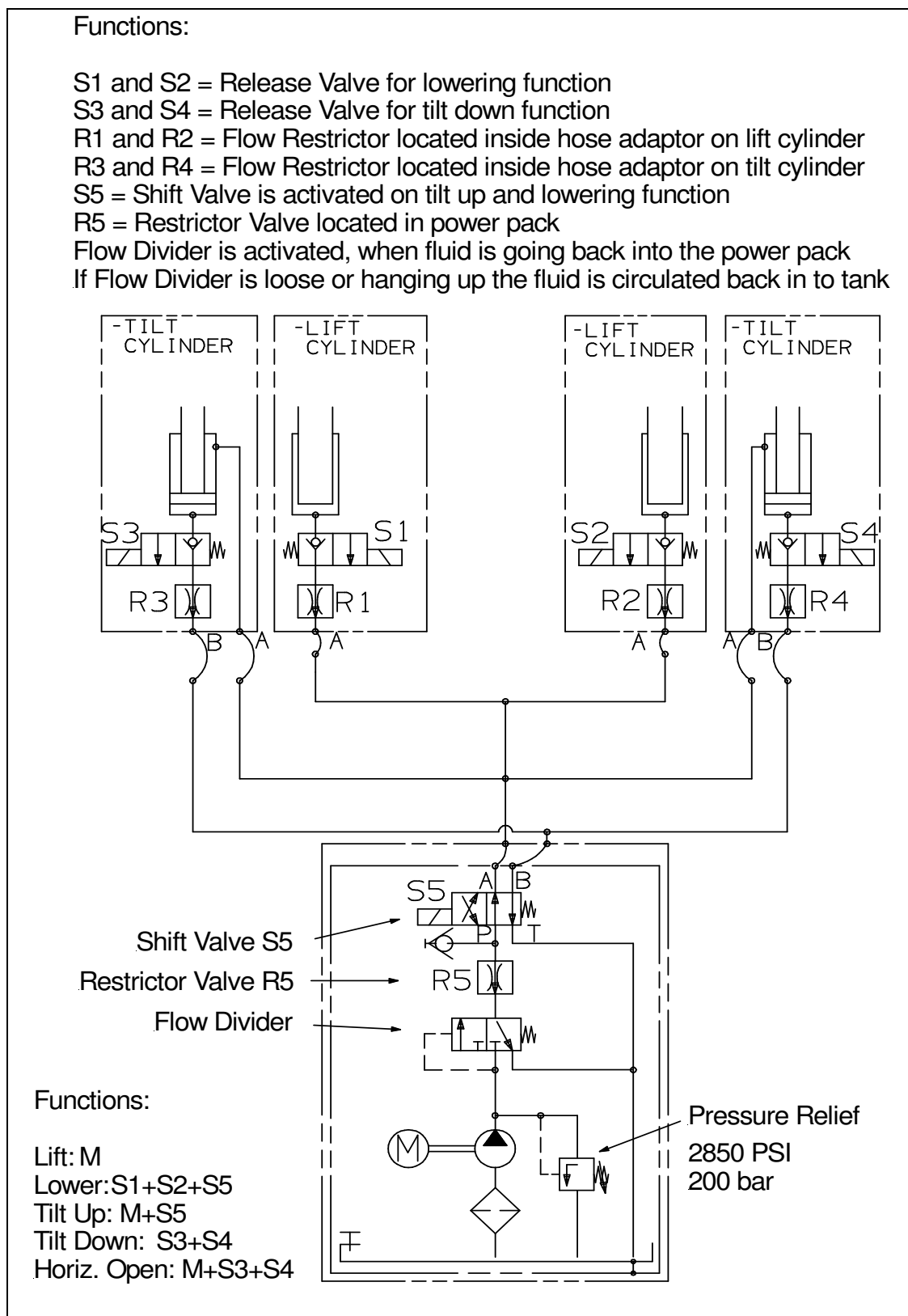


Figure 11: Hydraulic Schematic

---

## **8. Needed Information for Ordering Spare Parts and Repairs**

### **8.1 Ordering Spare Parts**

In order to assure quick delivery of spare parts, please always state the following information when making orders:

1. Liftgate model & serial number.
2. Designation and number of the spare part in accordance with the spare parts list.
3. Designation and number marked on the individual component (if available).

### **8.2 Repairs**

Parts sent to PALFINGER Liftgates to repair must be accompanied by a letter (in separate cover) giving details and scope of the repairs required.

---

## 9. Warranty

PALFINGER Liftgates provides warranty as part of its conditions of delivery.

Spare part deliveries are first of all billed. PALFINGER Liftgates issues credit for all or part of the invoiced sum when PALFINGER Liftgates has been able to determine that the warranty claim is justified as defined by its warranty conditions. PALFINGER Liftgates does this by inspecting the defected parts which are sent back to PALFINGER Liftgates freight-prepaid as well as the written description of the problem which must have been filled out in full.

The parts that are sent back to PALFINGER Liftgates, marked with serial number and address, become PALFINGER Liftgates' property if the warranty claim is accepted.

All warranty claims must be received **within 30 days** of repair or replacement. Including the following information:

1. Liftgate model.
2. Liftgate serial number.
3. Description of problem.
4. Itemized bill of repair with break down of number of hours to perform warranty work and labor charges per repair.
5. Parts used for repair with PALFINGER Liftgates part number.
6. RMA#.
7. Contact at PALFINGER Liftgates, if applicable.

Model	Pump and Motor	Cylinders	Hardware	Control System	Hydraulic
ILK Plus	2 yr	3 yr	3 yr	2 yr	2 yr

***Table 3: Warranty Coverage Schedule<sup>1</sup>***

---

<sup>1</sup> Effective: Aug. 2010

---

**10. Contact Address**

**PALFINGER Liftgates, LLC.**

15939 Piuma Ave  
Cerritos, CA 90703

Phone: (562)-924-8218

Fax: (562)-924-8318

E-mail (parts order): [customerservice@PALFINGER.com](mailto:customerservice@PALFINGER.com)

E-mail (technical support): [technicalservice@PALFINGER.com](mailto:technicalservice@PALFINGER.com)

**PALFINGER Liftgates, LLC.**

572 Whitehead Road  
Trenton, NJ 08619

Phone: (609)-587-4200

Fax: (609)-587-4201

E-mail (parts order): [customerservice@PALFINGER.com](mailto:customerservice@PALFINGER.com)

E-mail (technical support): [technicalservice@PALFINGER.com](mailto:technicalservice@PALFINGER.com)